



Undergraduate  
Room Charges  
2020-21



PEMBROKE  
COLLEGE OXFORD



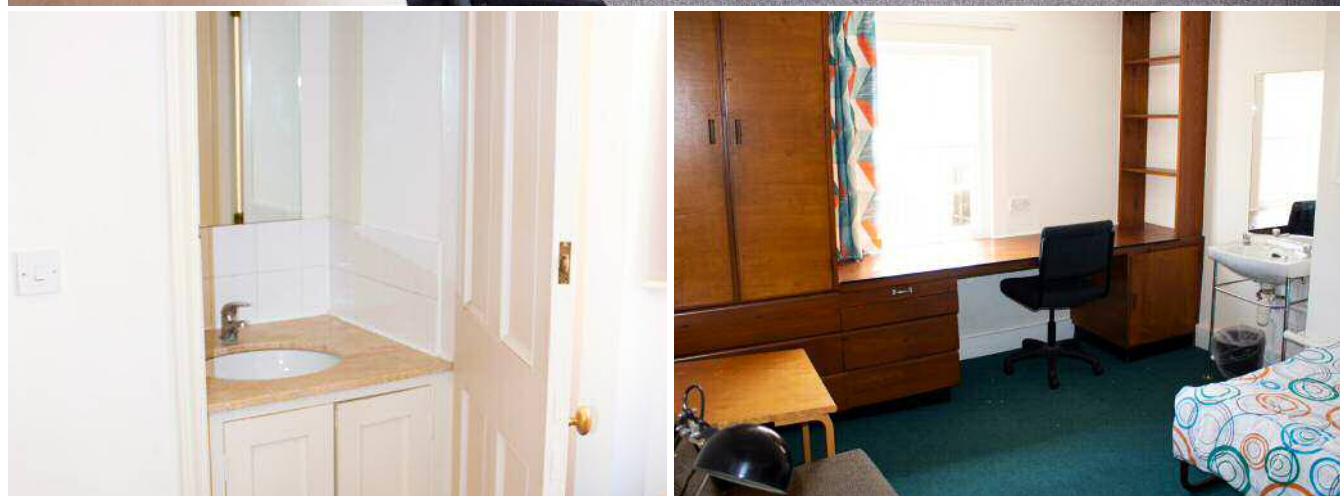
# Band A

Single rooms with shared washroom facilities nearby

Average size

11 square metres

Term	Freshers	Returners	Returners (38-week)
1	£1,377.20	£1,125	£1,311
2	£1,125	£1,125	£1,311
3	£1,125	£1,125	£1,311
<b>Total</b>	<b>£3,627.20</b>	<b>£3,375</b>	<b>£3,933</b>
<b>Nightly</b>	<b>£19.07</b>	<b>£19.07</b>	<b>£14.84</b>



# Band B

Larger single rooms with shared washroom facilities nearby

Average size

15 square metres

Term	Freshers	Returners	Returners (38-week)
1	£1,590.53	£1,328	£1,548
2	£1,328	£1,328	£1,548
3	£1,328	£1,328	£1,548
<b>Total</b>	<b>£4,246.53</b>	<b>£3,984</b>	<b>£4,644</b>
<b>Nightly</b>	<b>£22.51</b>	<b>£22.51</b>	<b>£17.52</b>

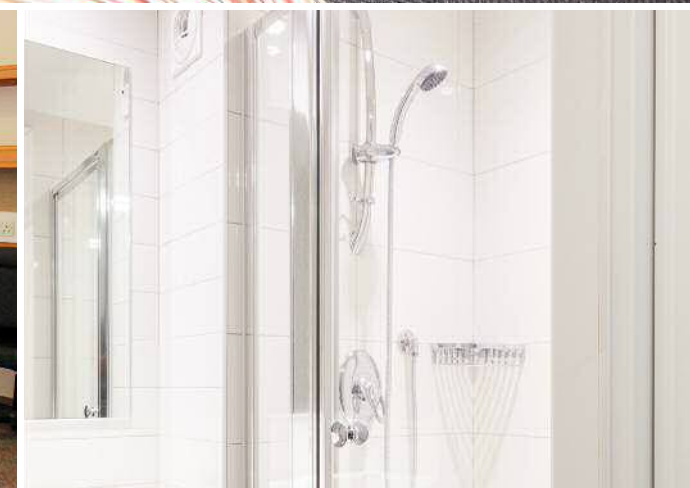




# Band D

**Single rooms with ensuite shower and WC**

<b>Term</b>	<b>Freshers</b>	<b>Returners</b>	<b>Returners (38-week)</b>
<b>1</b>	£2061.31	£1,776	£2,064
<b>2</b>	£1,776	£1,776	£2,064
<b>3</b>	£1,776	£1,776	£2,064
<b>Total</b>	£5,613.31	£5,328	£6,192
<b>Nightly</b>	£30.10	£30.10	£23.37



# Band E

**Superior single rooms with  
ensuite shower and WC**

<b>Term</b>	<b>Freshers</b>	<b>Returners</b>	<b>Returners (38-week)</b>
<b>1</b>	£2,422.80	£2,120	N/A
<b>2</b>	£2,120	£2,120	N/A
<b>3</b>	£2,120	£2,120	N/A
<b>Total</b>	£6,662.80	£6,360	N/A
<b>Nightly</b>	£35.93	£35.93	N/A





# Band F

Superior double rooms  
with ensuite shower and  
WC



Term	Freshers	Returns	Returns (38-week)
1	£2,496.36	£2,190	N/A
2	£2,190	£2,190	N/A
3	£2,190	£2,190	N/A
<b>Total</b>	<b>£6,876.36</b>	<b>£6,570</b>	<b>N/A</b>
<b>Nightly</b>	<b>£37.12</b>	<b>£37.12</b>	<b>N/A</b>



# Charges

2020/21

## Freshers (First Year Undergraduates)

Contracts are term-time only, with an extra week in the first term (Michaelmas) for Freshers' Week. The Michaelmas Term fee is higher than that for Hilary (Term 2) and Trinity (Term 3) because it includes additional rent and food costs for Freshers' Week, plus a one-off College Amenities Charge.

	<b>Band</b>						
	<b>A</b>	<b>B</b>	<b>D</b>	<b>E</b>	<b>F</b>	<b>Dinners</b>	<b>Annual Utilities and Insurance Charge</b>
<b>Term 1</b>	£1,377.20	£1,590.53	£2,061.31	£2,422.80	£2,496.36	£336.60	
<b>Term 2</b>	£1,125	£1,328	£1,776	£2,120	£2,190	£336.60	
<b>Term 3</b>	£1,125	£1,328	£1,776	£2,120	£2,190	£336.60	
<b>Total</b>	£3,627.20	£4,246.53	£5,613.31	£6,662.80	£6,876.36		£420
<b>Nightly</b>	£19.07	£22.51	£30.10	£35.93	£37.12		

# Returners (Second, Third and Fourth Year Undergraduates)

2020/21

There are two types of contract available for second, third and fourth year undergraduates living on the main site. Some rooms have a term-time only contract, whereas others come with a 38-week contract, which runs from late September to mid-June.

## Returners - Term-time only contracts

	Band					
	A	B	D	E	F	Annual Utilities and Insurance Charge
<b>Term 1</b>	£1,125	£1,328	£1,776	£2,120	£2,190	
<b>Term 2</b>	£1,125	£1,328	£1,776	£2,120	£2,190	
<b>Term 3</b>	£1,125	£1,328	£1,776	£2,120	£2,190	
<b>Total</b>	£3,375	£3,984	£5,328	£6,360	£6,570	£420
<b>Nightly</b>	£19.07	£22.51	£30.10	£35.93	£37.12	

## Returners - 38-week contracts

	Band					
	A	B	D	E	F	Annual Utilities and Insurance Charge
<b>Term 1</b>	£1,311	£1,548	£2,064	N/A	N/A	
<b>Term 2</b>	£1,311	£1,548	£2,064	N/A	N/A	
<b>Term 3</b>	£1,311	£1,548	£2,064	N/A	N/A	
<b>Total</b>	£3,933	£4,494	£6,192	N/A	N/A	£420
<b>Nightly</b>	£14.84	£17.52	£23.37	N/A	N/A	