

## UNDERGRADUATE MAIN SITE ACCOMMODATION (2018-19)



### Band A

Single rooms with shared washroom facilities nearby

Average size: 11 square metres



### Band B

Larger single rooms with shared washroom facilities nearby

Average size: 15 square metres



**Band C**

*None available for 2018-19*



**Band D**

**Rooms with en suite shower and WC**



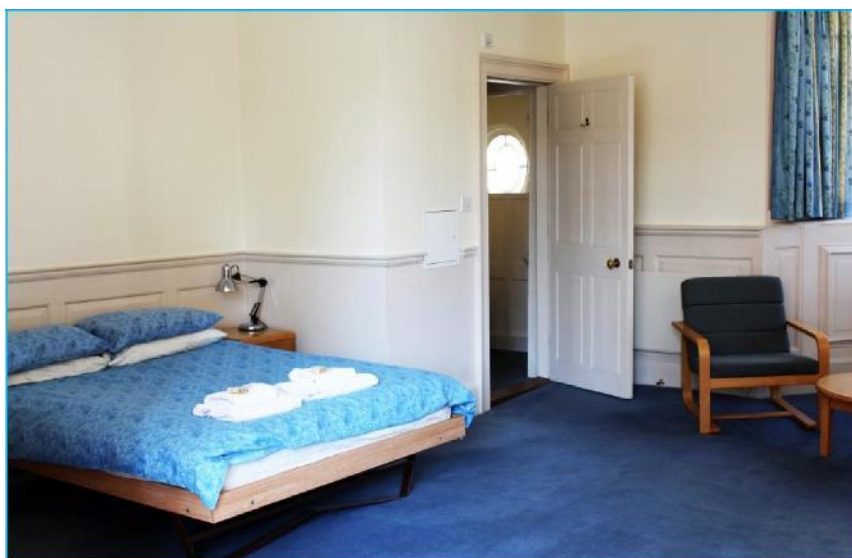
**Band E**

**Superior rooms with en suite shower and WC**



## Band F

Superior double rooms with en suite shower and WC



### CHARGES

#### **FRESHERS** (1<sup>st</sup> year undergraduates)

Contracts are term-time only, with an extra week in the first term (Michaelmas) for Freshers' week.

The Michaelmas term fee is higher than that for Hilary and Trinity because it includes additional rent and food costs for Freshers' week, plus a one-off College Amenities Charge.

Main site Freshers	1 <sup>st</sup> term (Michaelmas)	2 <sup>nd</sup> & 3 <sup>rd</sup> term (Hilary/Trinity)	Freshers Annual total	Nightly rate
BAND A	<b>£1,288.03</b>	<b>£1,053</b> per term	<b>£3,394.03</b>	<b>£17.85</b>
BAND B	<b>£1,486.63</b>	<b>£1,242</b> per term	<b>£3,970.63</b>	<b>£21.05</b>
BAND C	<b>N/A</b>	<b>N/A</b>	<b>N/A</b>	<b>N/A</b>
BAND D	<b>£1,927.99</b>	<b>£1,662</b> per term	<b>£5,251.99</b>	<b>£28.17</b>
BAND E	<b>£2,266.37</b>	<b>£1,984</b> per term	<b>£6,234.37</b>	<b>£33.63</b>
BAND F	<b>£2,334.67</b>	<b>£2,049</b> per term	<b>£6,432.67</b>	<b>£34.73</b>
<i>Dinners</i>	<b>£315.18</b>	<b>£315.18</b> <i>per term</i>		
<i>Annual Utilities &amp; Insurance Charge</i>		-	<b>£390</b>	

**RETURNERS: 2<sup>nd</sup>, 3<sup>rd</sup> and 4<sup>th</sup> year undergraduates**



There are two types of contract available for 2<sup>nd</sup>, 3<sup>rd</sup> and 4<sup>th</sup> year undergraduates living on the main site. Some rooms have a term-time only contract, whereas others come with a 38 week contract, which runs from late September to mid-June. Below are costs for 2017-18.

**Returners: Term-time only contracts**

Main site Returners	Termly rate Term-time contracts	Annual rate Term-time contracts	Nightly rate Term-time contracts
BAND A	<b>£1,053</b>	<b>£3,159</b>	<b>£17.85</b>
BAND B	<b>£1,242</b>	<b>£3,726</b>	<b>£21.05</b>
BAND C	<b>N/A</b>	<b>N/A</b>	<b>N/A</b>
BAND D	<b>£1,662</b>	<b>£4,986</b>	<b>£28.17</b>
BAND E	<b>£1,984</b>	<b>£5,952</b>	<b>£33.63</b>
BAND F	<b>£2,049</b>	<b>£6,147</b>	<b>£34.73</b>
<i>Annual Utilities &amp; Insurance Charge</i>		<b>£390</b>	

**Returners: 39-week\* contracts**

Main site Returners	Termly rate 38 week contracts	Annual rate 38 week contracts	Nightly rate 38 week contracts
BAND A	<b>£1,259</b>	<b>£3,558</b>	<b>£13.43</b>
BAND B	<b>£1,486</b>	<b>£4,200</b>	<b>£15.85</b>
BAND C	<b>N/A</b>	<b>N/A</b>	<b>N/A</b>
BAND D	<b>£1,983</b>	<b>£5,607</b>	<b>£21.16</b>
BAND E	<b>N/A</b>	<b>N/A</b>	<b>N/A</b>
BAND F	<b>N/A</b>	<b>N/A</b>	<b>N/A</b>
<i>Annual Utilities &amp; Insurance Charge</i>		<b>£390</b>	